



Company : Overseas Energy Holdings Ltd

Well : Westwood 1

Interval : 778.00 - 1140.52 meters

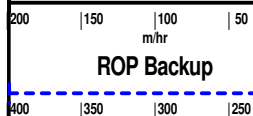
Created : 15/Dec/2009 1:34:01 PM

**OEH**  
OVERSEAS ENERGY HOLDINGS LTD

**INTEQ**

## DRILLING DATA PLOT

ROP



WOB Avg



MD meters 1:500

INTERPRETED  
LITHOLOGY

WOB: 5 - 53 klbf  
RPM: 21 - 107  
FLOW: 322 - 404 gpm  
SPP: 317 - 748 psi

780  
790  
800  
810  
820  
830  
840  
850  
860  
870  
880



WOB: 6 - 34 klbf  
RPM: 90 - 106  
FLOW: 134 - 584 gpm  
SPP: 117 - 1598 psi

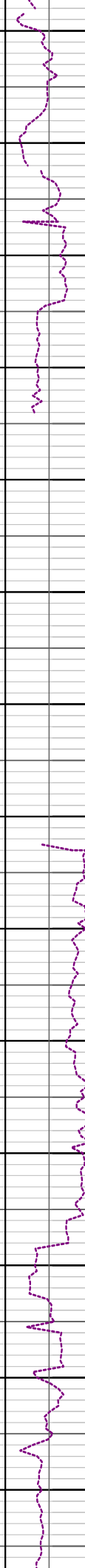
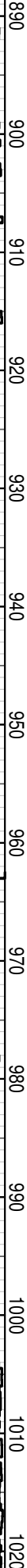
MW: 9.2ppg (1.02sg) FV: 45  
PV: 14 GELS: 7/16 KCl: 0.0%  
YP: 25 pH: 9.5

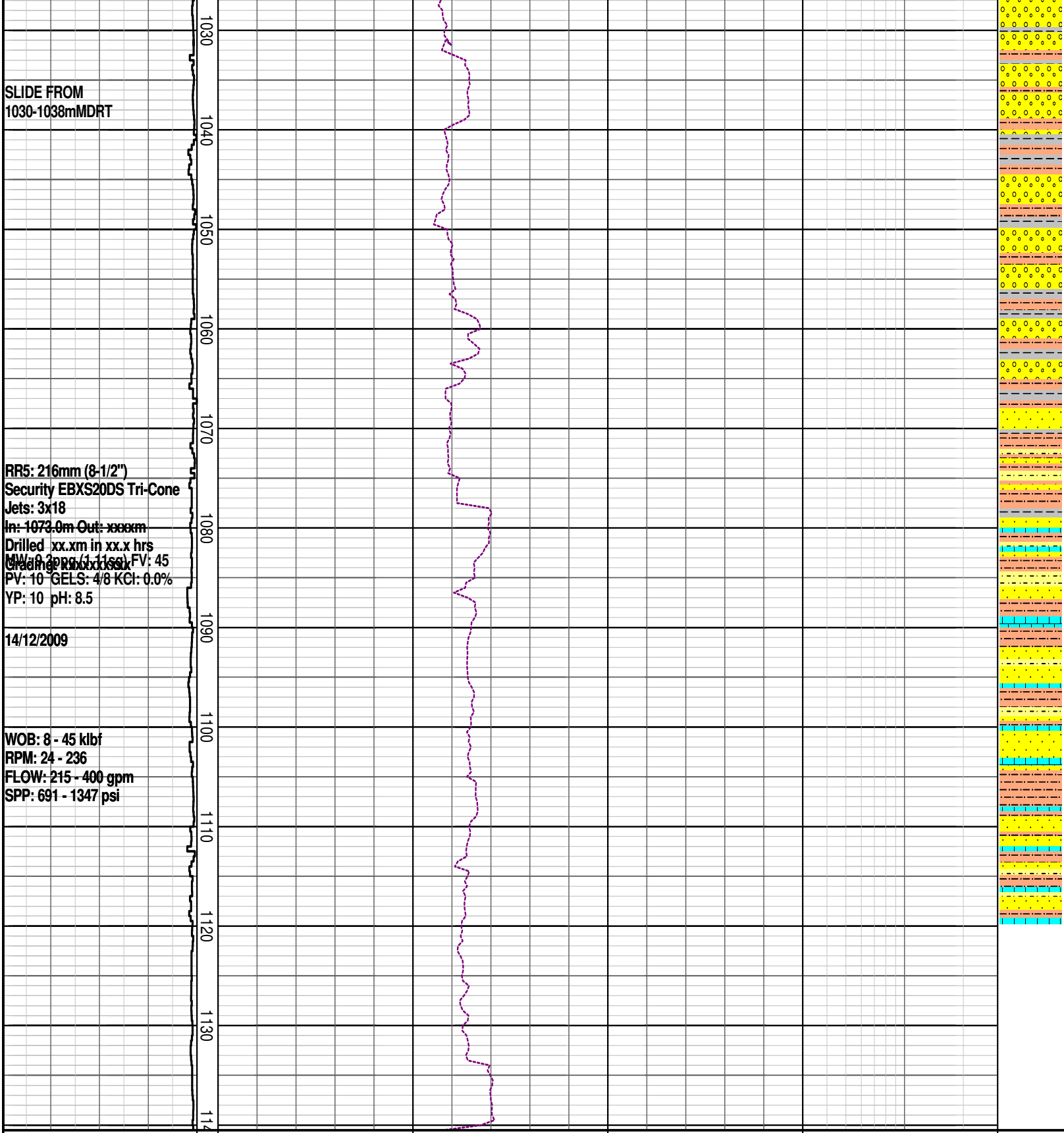
09/12/2009  
Drilling Data Missing  
(924-962m MDRT)- Break  
Down of Block high Sensor

WOB: 15 - 44 klbf  
RPM: 90 - 105  
FLOW: 195 - 439 gpm  
SPP: 589 - 749 psi

NB5: 216mm (8-1/2")  
Security EBXS20DS Tri-Cone  
Jets: 3x18  
In: 1005.0m Out: 1073.0m  
Drilled 68.0m in 15.3 hrs  
Grading: xxxxxxxxxx

MW: 9.3ppg (1.11sg) FV: 40  
PV: 12 GELS: 8/14 KCl: 0.0%  
YP: 17 pH: 9.0





DRILLING DATA PLOT

